

# • Hub

## h

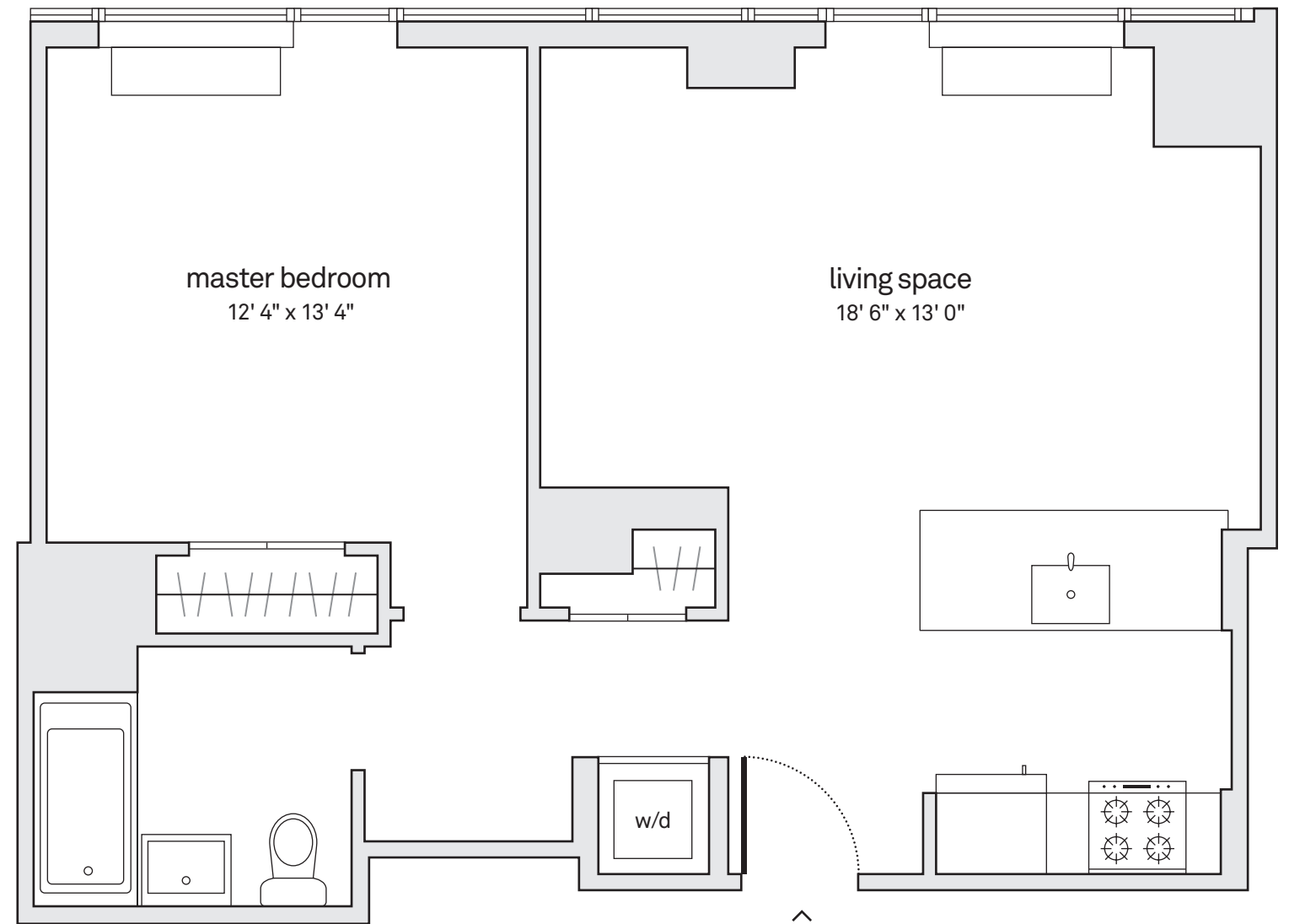
### penthouse floors 50-55 1 bedroom, 1 bath

- 10'+ ceiling height
- floor-to-ceiling windows in most homes
- open peninsula kitchen
- custom Italian kitchen cabinetry
- Caesarstone countertops and Carrara marble backsplashes
- Bertazzoni range and built-in microwave
- panelized Bosch refrigerator and dishwasher
- Bosch washer and dryer
- Grohe and Kohler fixtures
- custom window shades
- 5" wide oak wood flooring

date: \_\_\_\_\_

price: \_\_\_\_\_

agent: \_\_\_\_\_



All information regarding this floor plan is from sources deemed reliable. However, Hub Associates, LLC, cannot assure its accuracy and bears no responsibility for any errors, omissions or misstatements. This plan is for approximate informational purposes only and should be used as such by the prospective renter. All dimensions are approximate and should be remeasured by the prospective renter for absolute accuracy.