

•Hub

j

floors 42-49 2 bedrooms, 2 baths

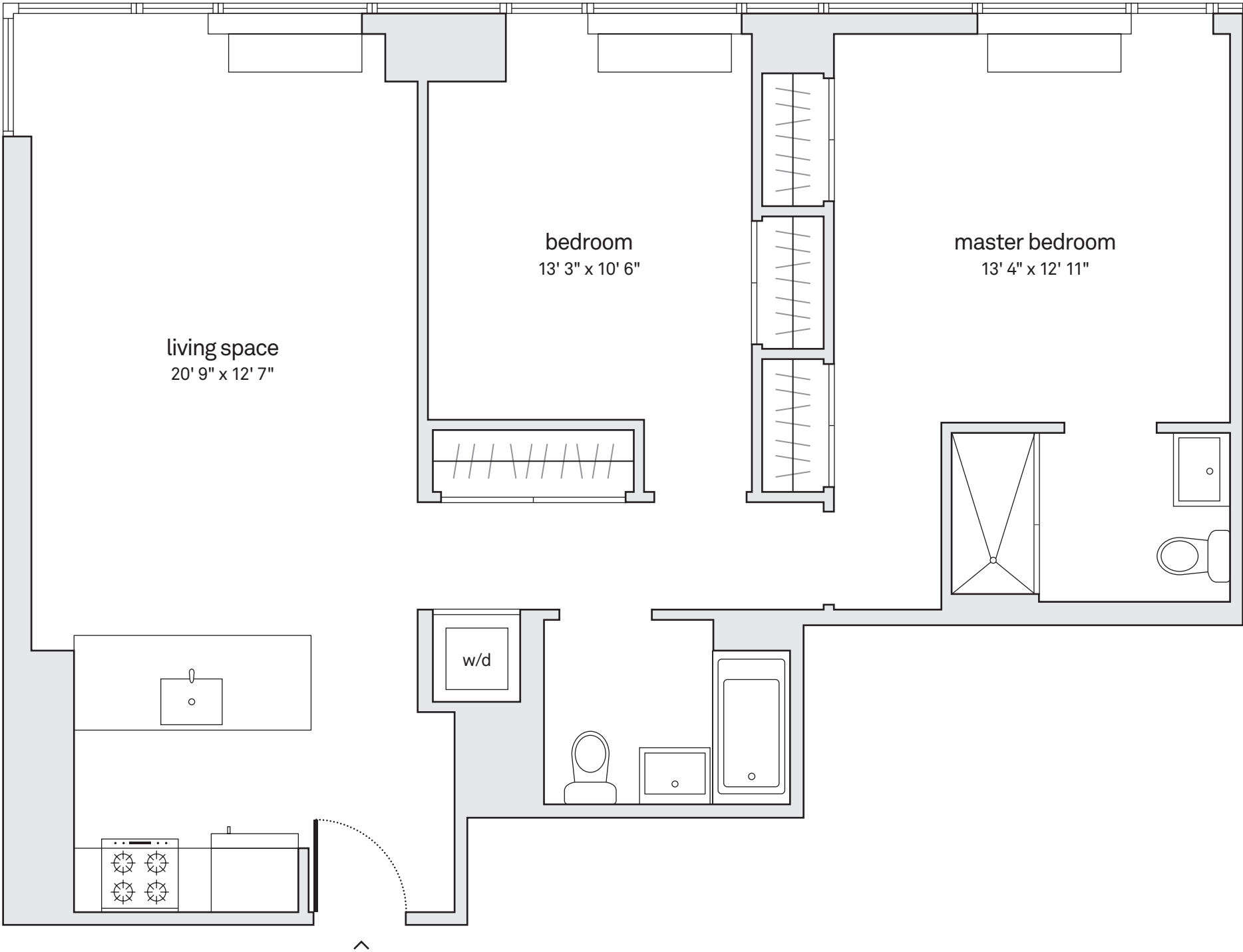
- 9' ceiling height*
- floor-to-ceiling windows in most homes
- corner windows
- open peninsula kitchen
- custom Italian kitchen cabinetry
- Caesarstone countertops and marble backsplashes
- stainless steel appliances
- Bosch washer and dryer
- Grohe and Kohler fixtures
- en-suite master bathroom with Ruscello marble tiled walk-in shower
- double closets in master bedroom
- custom window shades
- 5" wide oak wood flooring

date: _____

price: _____

agent: _____

*10'+ ceiling height
on floor 49



All information regarding this floor plan is from sources deemed reliable. However, Hub Associates, LLC, cannot assure its accuracy and bears no responsibility for any errors, omissions or misstatements. This plan is for approximate informational purposes only and should be used as such by the prospective renter. All dimensions are approximate and should be remeasured by the prospective renter for absolute accuracy.